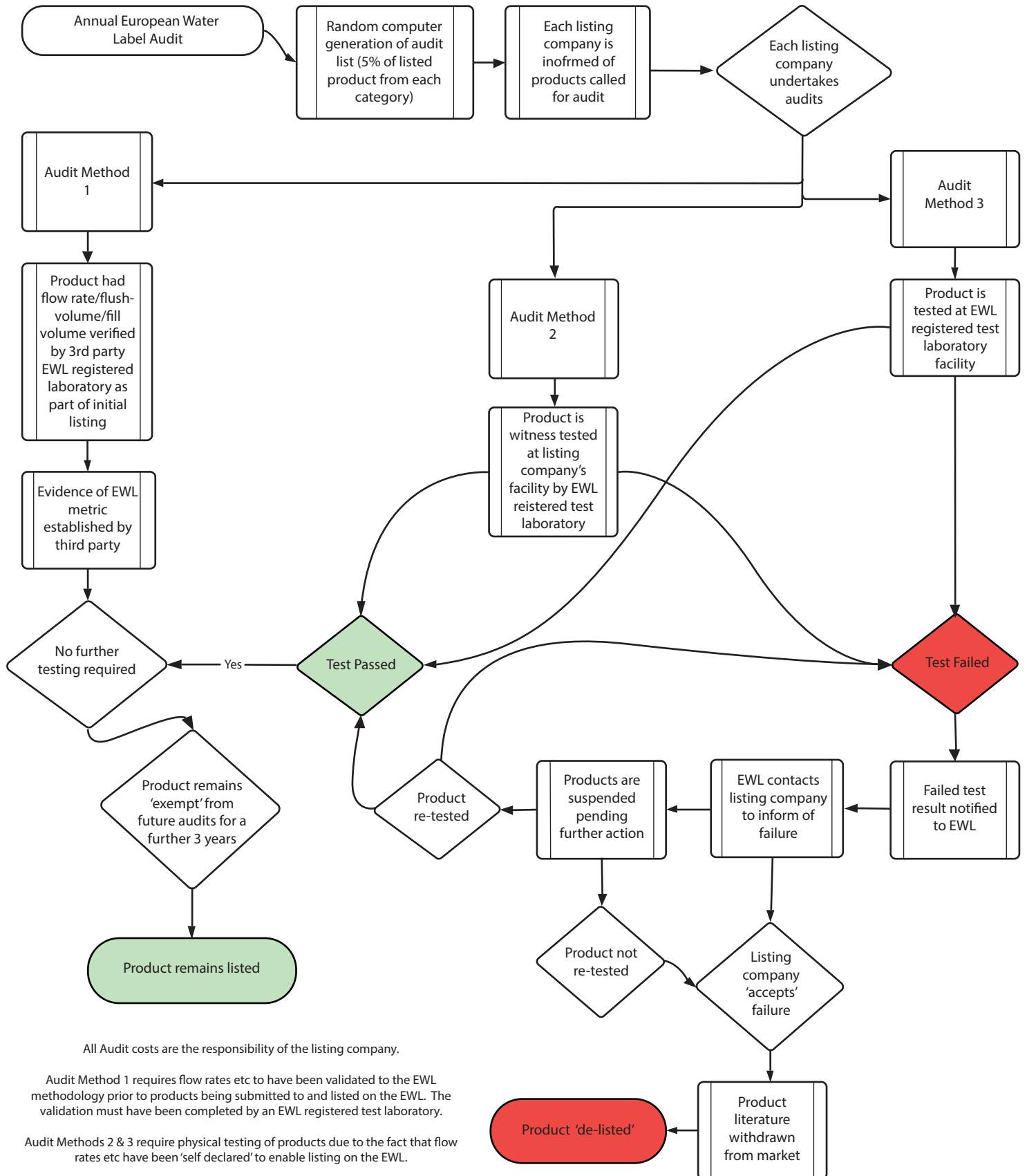


European Water Label Audit Procedure



All Audit costs are the responsibility of the listing company.

Audit Method 1 requires flow rates etc to have been validated to the EWL methodology prior to products being submitted to and listed on the EWL. The validation must have been completed by an EWL registered test laboratory.

Audit Methods 2 & 3 require physical testing of products due to the fact that flow rates etc have been 'self declared' to enable listing on the EWL.

Third Party EWL registered test laboratories will charge a pre agreed EWL standard set of charges for witness testing. This will be a day rate value.

Third Party EWL registered test laboratories will charge a pre agreed EWL standard set of charges for testing products in their own laboratory.